



THE HOLCOMB



THE HOLCOMB

Model number: 41PRF32764AH18

4 beds • 2 baths • 2432 sq.ft. • 32' width • 76' depth

Our home building facilities invest in continuous product and process improvements. Plans, dimensions, features, materials, specifications and availability are subject to change without notice or obligation. Renderings and floor plans are representative likenesses of our homes and may differ from the actual homes. We invite you to tour a Home Center near you and inspect the highest value in quality housing available or call (806) 372-8763 to speak with a Home Consultant. Copyright 2017, CMH. All rights reserved.

<https://www.claytonhomesofamarillo.com>

CLAYTON HOMES-AMARILLO

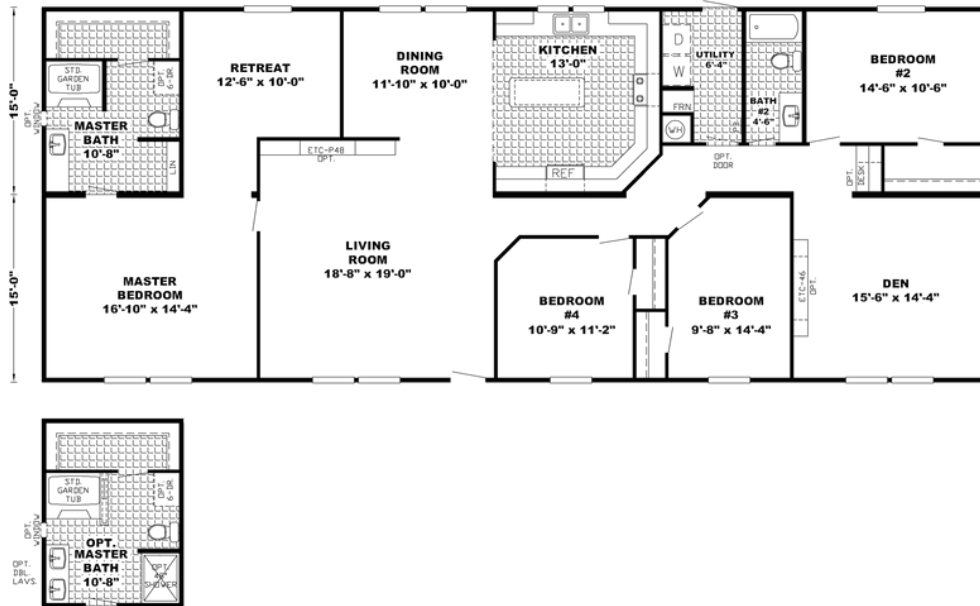
5000 AMARILLO BLVD E
AMARILLO, TX 79107

Monday - Thursday: 9am to 6pm
Friday: 9am to 6pm
Saturday: 9am to 5pm
Sunday: Closed

(806) 372-8763



THE HOLCOMB



THE HOLCOMB Model number: 41PRF32764AH18

4 beds • 2 baths • 2432 sq.ft. • 32' width • 76' depth

Our home building facilities invest in continuous product and process improvements. Plans, dimensions, features, materials, specifications and availability are subject to change without notice or obligation. Renderings and floor plans are representative likenesses of our homes and may differ from the actual homes. We invite you to tour a Home Center near you and inspect the highest value in quality housing available or call (806) 372-8763 to speak with a Home Consultant. Copyright 2017, CMH. All rights reserved.

<https://www.claytonhomesofamarillo.com>

CLAYTON HOMES- AMARILLO

5000 AMARILLO BLVD E
AMARILLO, TX 79107

Monday - Thursday: 9am to 6pm
Friday: 9am to 6pm
Saturday: 9am to 5pm
Sunday: Closed

(806) 372-8763